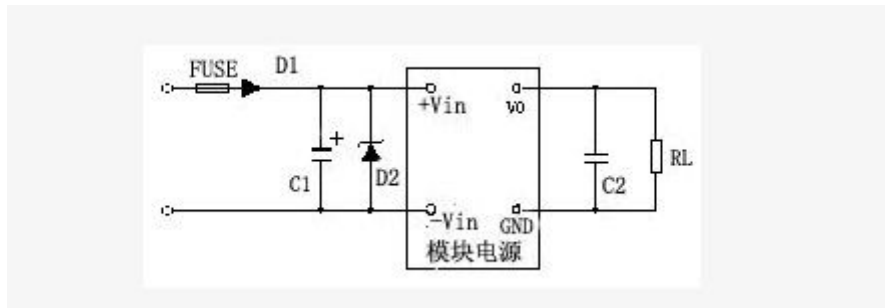


DC/DC Converter Application Notes

Generally this DC/DC converter series of products have built-in filter, which can meet the requirements of general power applications. As shown in figure for peripheral recommended circuit: input C1 for aluminium electrolytic capacitor to absorb module at the input voltage peak and for module provides certain maintain voltage, D2 for transient absorption diode with insurance tube FUSE use, can prevent the input power transient high pressure will power module burned, ensure module in safety input voltage range. D1 pick for the protection of diode. Transient absorption diode D2 selection see recommended list.



Input Voltage	Input Voltage Range	Transient Absorption Diode
24V	18 ~ 36V	P6KE 39A
48V	36 ~ 72V	P6KE 75A
110V	72 ~ 144V	P6KE 150A

For the output, please take care the load connects the anti-interference capacity C2. PCB layout, the output copper wire should as far as possible wide, and line spacing should not be too big, output shunt capacitance C2 should as far as possible close to the module power, in order to reduce interference.